

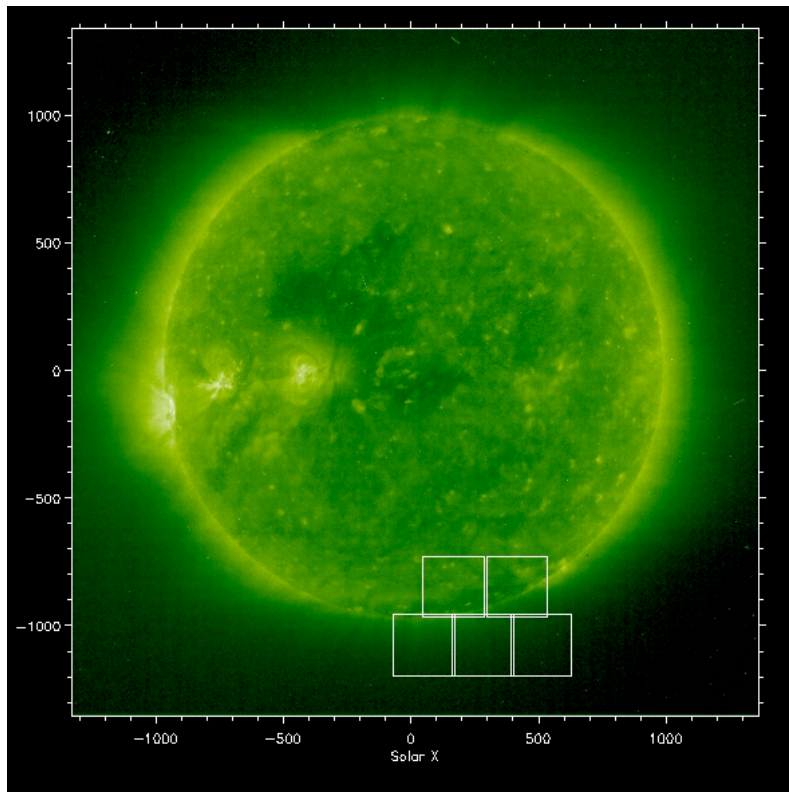
## SOHO/CDS Observations during WHI March 20 - April 16, 2008

CDS observed the WHI target(s) on a regular basis, including streamers, plumes, coronal holes, active regions, and quiet sun.

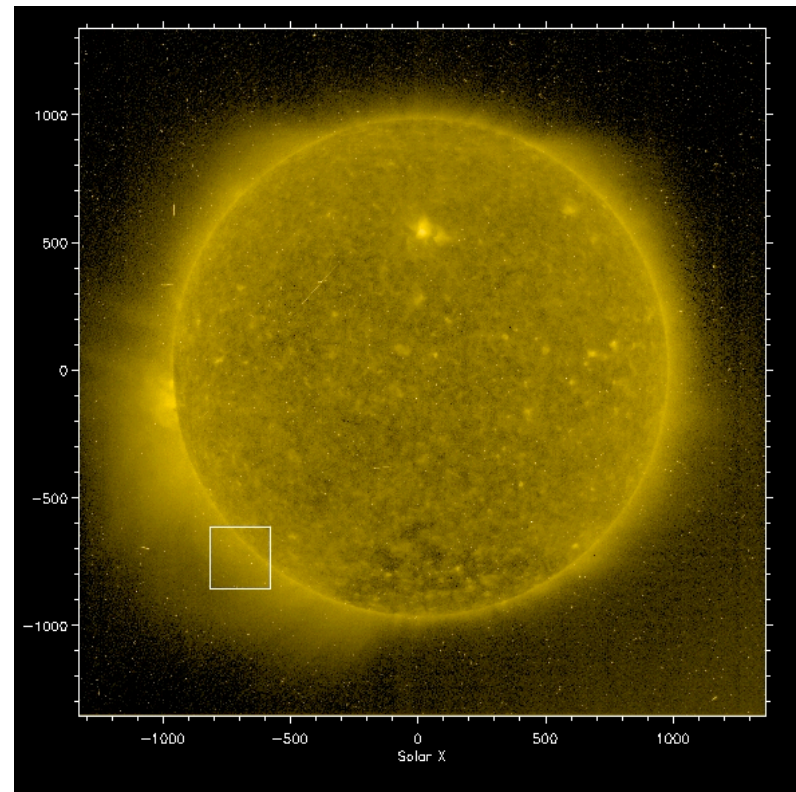
I've got a list of the observations including quicklook and field of view images for the streamer and coronal hole observations.

For streamers, plumes,  
and coronal holes  
STRE4W 240x240" raster (1h 43min each)

Examples:



March 25, 2008



April 16, 2008

STRE4W/v111 - contains the main CDS coronal lines good  
for density and temperature diagnostics.

Si XII 520.66 Å

Fe XIV 334.17 Å

Ne VI 558.59/Ne VII 558.61 Å

Al XI 568.12 / Ne V 568.24 Å

Si IX 341.95 Å

Fe XIII 348.18 Å

Fe XI 352.66 Å

Si X 356.01/356.05 Å

Fe XIII 359.64/359.84 /Ne V Å

Si X 624.73/Mg X 624.94 Å

He I 548.33 Å

Al XI 550.03 Å

Ca X 557.77 Å

Al XI 568.12 Å

Fe XI 341.11 Å

Si X 347.40 Å

Fe XII 352.1/Mg V 352.2 Å

Fe XIV 353.83 Å

Fe XI 358.62 /Ne V, Ne IV 359 Å

Mg X 609.79 Å

O V 616.95 Å

Density sensitive ratios:

Si X 347/ 356, Fe XIII 348/ 360, Fe XIV 334 / 353 Å